



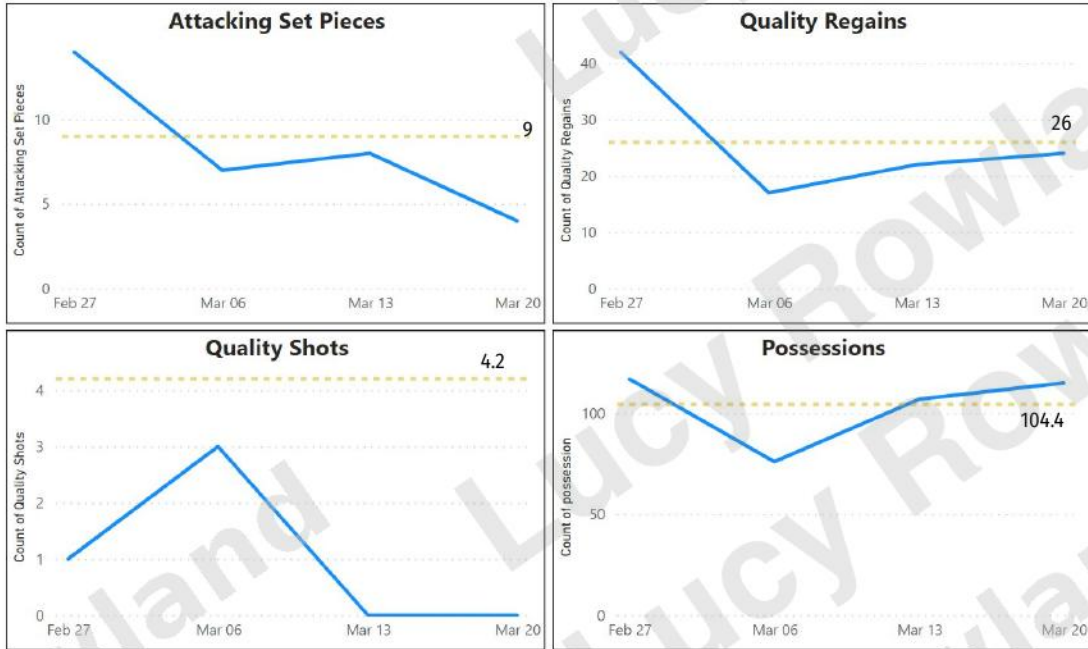
# 4 Match Trend Analysis

SJEQ

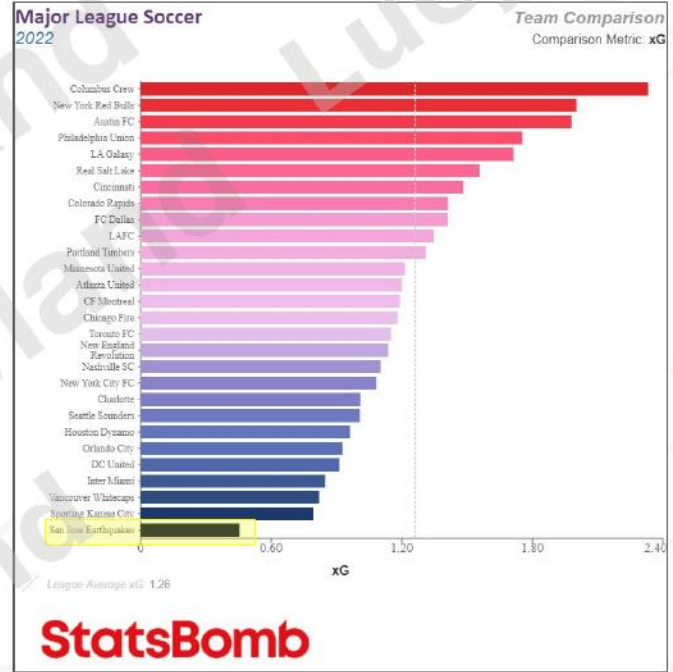
# Overview

1. We are not creating enough high quality shots. We can create more through taking more shots inside the box and generating more assists through cut-backs.
2. In possession we rely on passing laterally or backwards. We maintain possession but in the final-third we pass backwards more than any other team
3. We regain the ball in good areas but pass the ball backwards too often after a regain. We can improve our possession and our goal scoring opportunities by passing forward immediately after a regain
4. We have taken our set pieces well and are the 3rd best in MLS at set piece goals. We defend them well.

# 2022 San Jose Earthquakes



----- Top MLS Team Standards



**StatsBomb**

We are consistent in maintaining possession and close to getting our target number of quality regains. Our biggest downfall is the lack of quality shots. We are currently last in the MLS for xG per match.

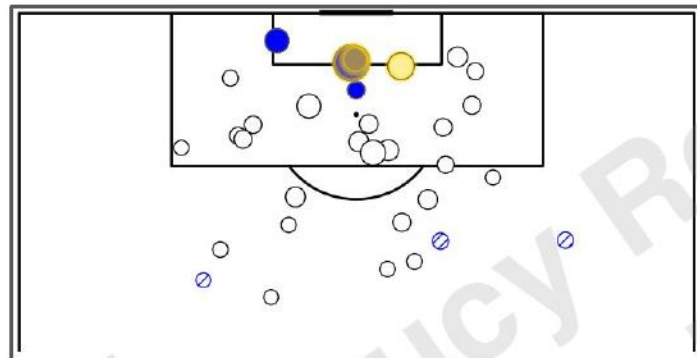
# 01.

- Take more shots inside the box
- Can create more shots from cut-backs
- We pass backwards too much when in the final third

## **Goal Scoring Opportunities**

# 2022 San Jose Earthquake Shots

2022 SJE Shots



\*Penalty shot not included on shot map

Low Quality (xG) High Quality (xG)



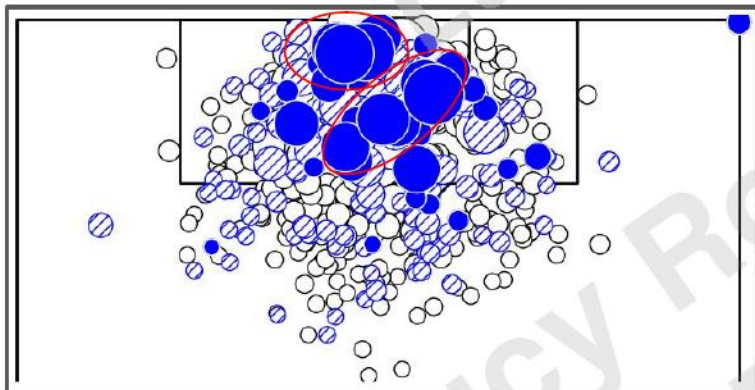
Average 8 Shots Total, 2 Shots on Target, 1 Quality Shot per match

Average match: 0.50 xG, Average shot: 0.06 xG

**40% of our shots are being taken outside of the box (very low probability of converting)**

# 2021 San Jose Earthquake Shots

2021 SJE Shots



\*Penalty shot not included on shot map

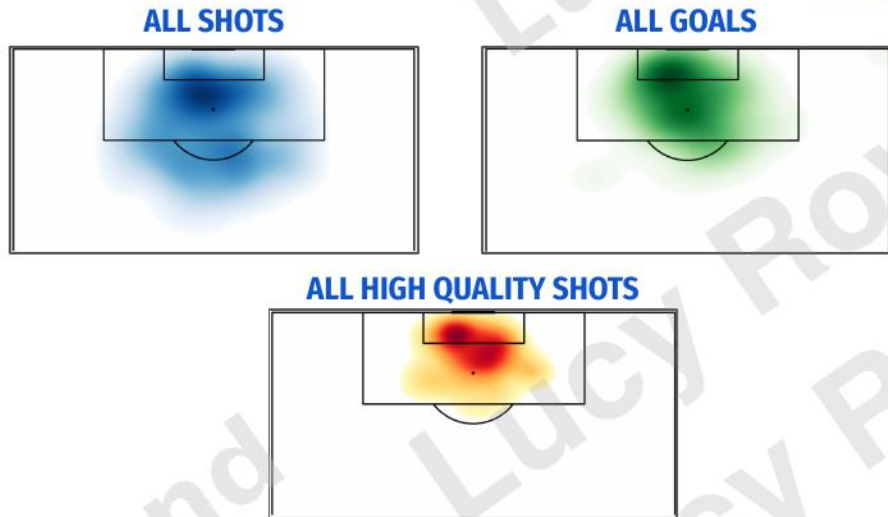


Average 13 shots total, 5 shots on target, 3 quality shots

Average match: 1.48 xG, Average shot: 0.10 xG

Generated the most quality shots from quality regains

# Where were SJE Goals Coming From? 2021



88% of goals came from inside the 18-yard box, but only 48% of all shots were taken inside the box.



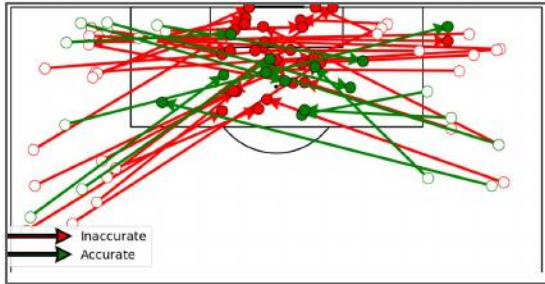
Red - ineffective (**stop doing**), Green - effective (**start doing**)

Our most effective passes (most likely to produce a goal) came from cut-backs on the ground, that were being received inside the box.

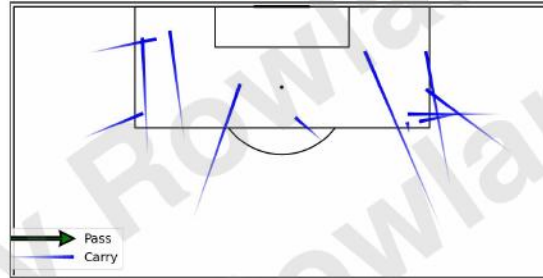
Our least effective passes (least likely to produce a goal) were high, lateral crosses from either side of the pitch

# Where are SJE Shots Coming From? 2022

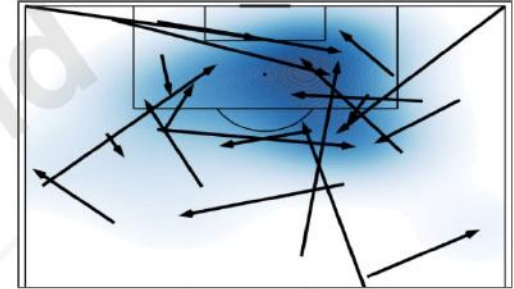
## ALL CROSSES



## ALL CARRIES INTO BOX



## ALL SHOT ASSISTS



**Crosses:** Same trend that lateral, straight crosses are failing. Crossing in from outside the 18 on the left flank is working better.

**Carries:** Average 2.3 carries into the box per match (lowest in MLS). Have only generated 2 shots

**All Shot Assists:** Short cut backs from either side are proving effective. Corners from the left are more effective than the right

# Where are Top MLS Teams Scoring?

2022

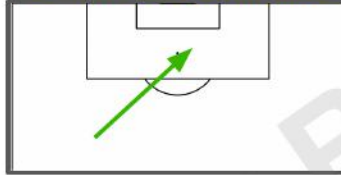
## Distribution Types

(Ranked by Effectiveness)

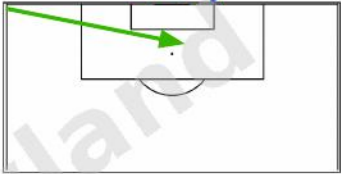
### 1 - Through Ball (Ground)



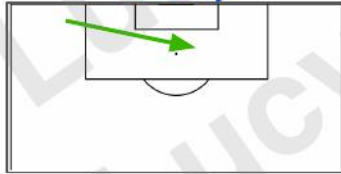
### 2 - Ball Over Back-Line



### 3 - Corner Delivered to Penalty



### 4 - Cut Back Delivered to Penalty



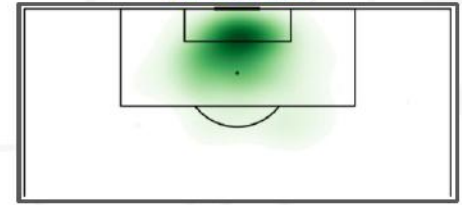
*All pass types apply to either side of pitch (eg: left corner or right corner)*

## Shooting Areas

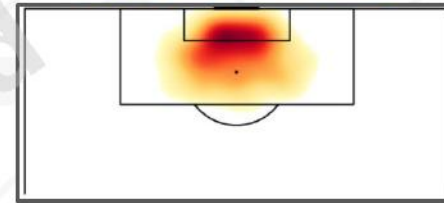
### ALL SHOTS



### ALL GOALS



### ALL HIGH QUALITY SHOTS

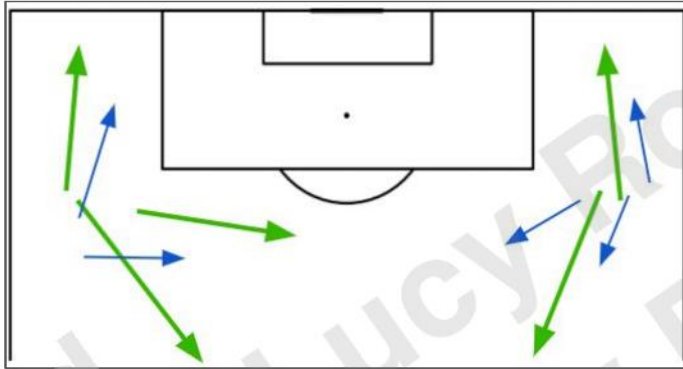


Effective distribution to get goals comes from through balls, balls over back line (incl. Free kicks), corners, and cut backs. Individual dribbles rarely get goals in MLS.

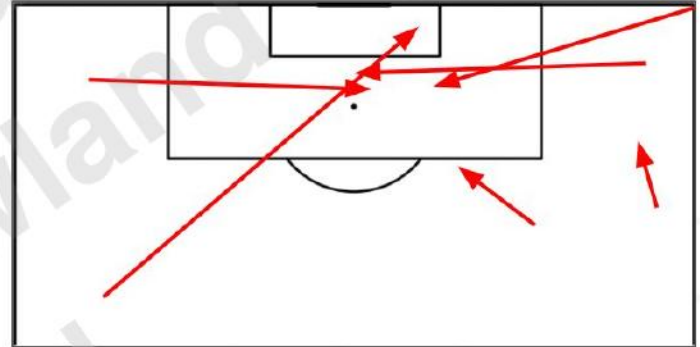
**Based on SJE trends, we should be attempting more short cutbacks to generating more scoring opportunities from the inside of the box. We need to stay away from long crosses and shots from outside the 18**

# What is SJE Doing in the Final Third? (2022)

COMMON PASSES AND CARRIES



COMMON MISSED PASS

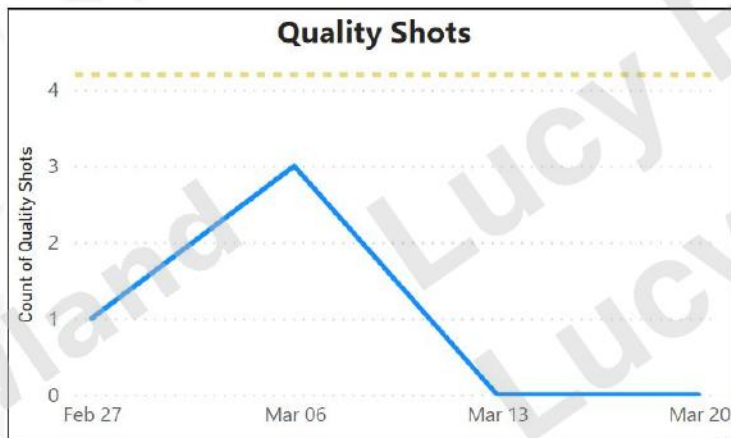


*These common occurrences are found by taking all passes and carries that SJE has done this year in final 1/3 and analyzing them with data to find the most common 'cluster'. The analysis groups together passes that have occurred frequently in the same space*

SJE loses the ball the most in the final third through high lateral crosses

**Once we have the ball in the final third, we pass backwards more than any other MLS team**

# Goal Scoring Summary



- Taking shots outside 18 yard box is a waste of a possession
- We can generate more shot opportunities with small cut backs
- Stop attempting high lateral crosses
- San Jose passes backwards too frequently when in the final third

# 02.

- Maintain possession well
- San Jose pass wide or backwards with the ball
- Our opposition have more directness

## Possession

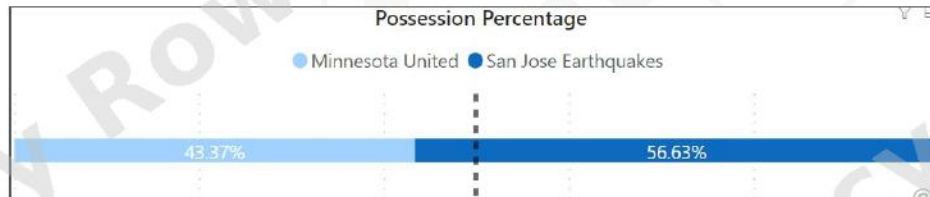
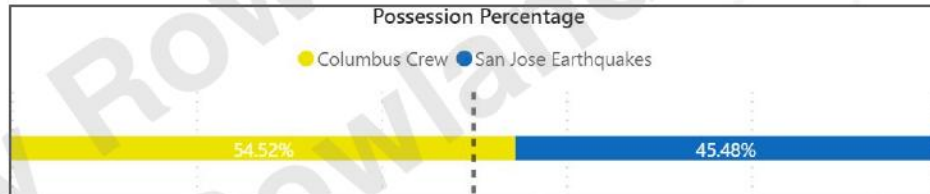
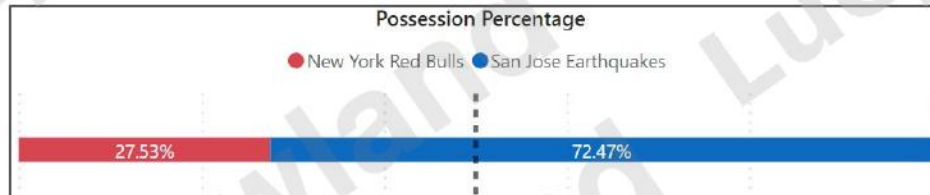
# Possession Stats (2022 Matches)

We are currently 1st in MLS for average possession percentage

- 60% average possession

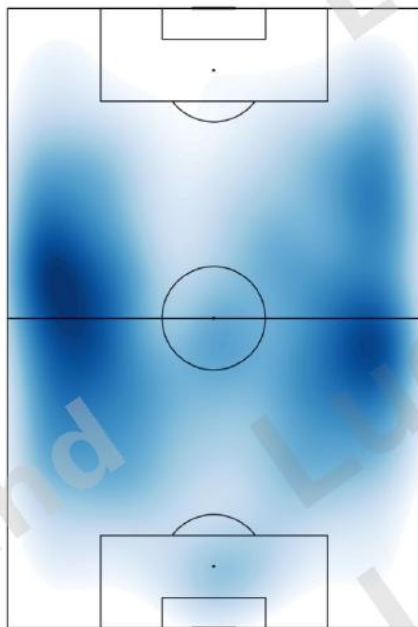
In 2021, we were 7th in MLS for average possession percentage

- 52% average possession

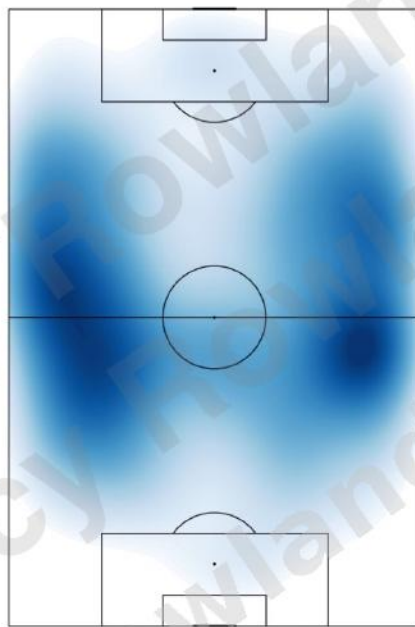


# SJE In Possession (2022)

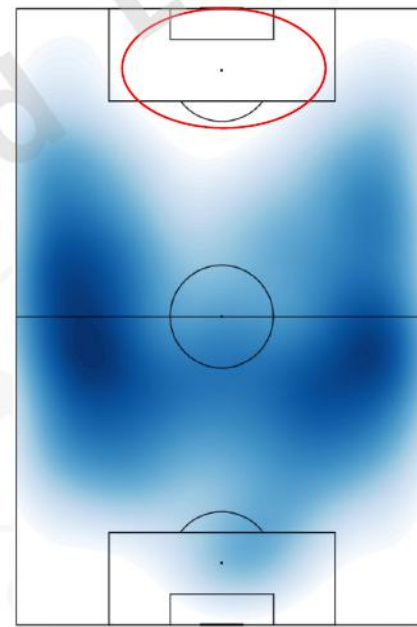
POSSESSION HEAT MAP



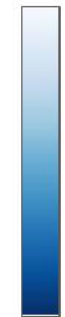
PASS ORIGINS



PASS END LOCATION



Fewer Actions

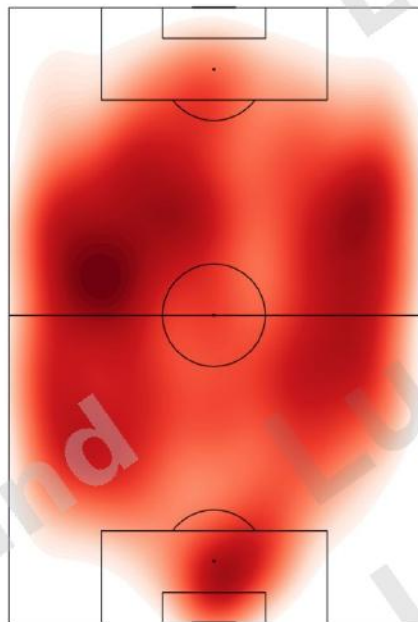


Many Actions

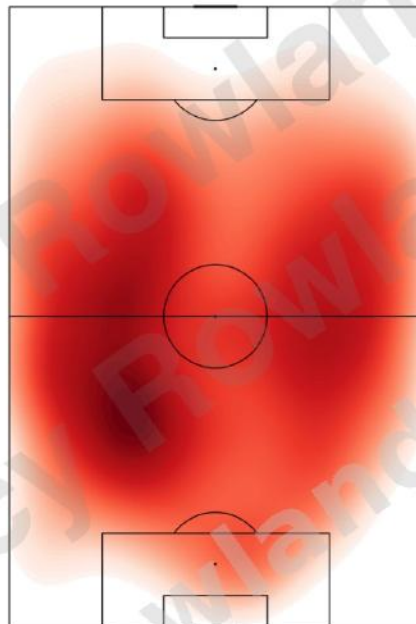
We are mainly passing from wide areas to the same wide areas or backwards

# OPP In Possession (2022)

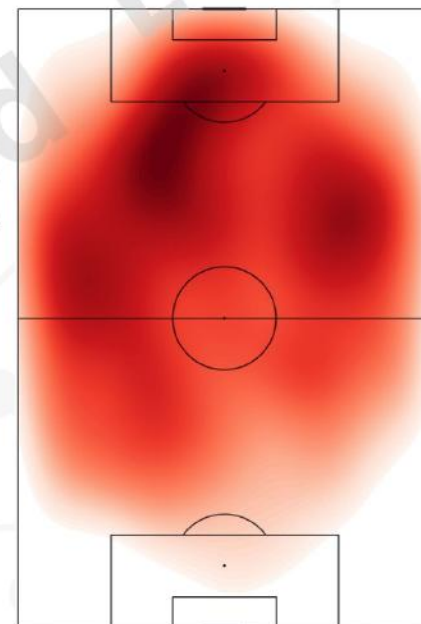
POSSESSION HEAT MAP



PASS ORIGINS



PASS END LOCATION



Our opponents have the most direct and narrow attack against us in MLS

# Possession Summary



- We retain the ball and keep possession
- However, we pass laterally too frequently and cannot progress possession forward
- Our opponents attack us directly and narrowly and are able to enter our attacking third with direct passes

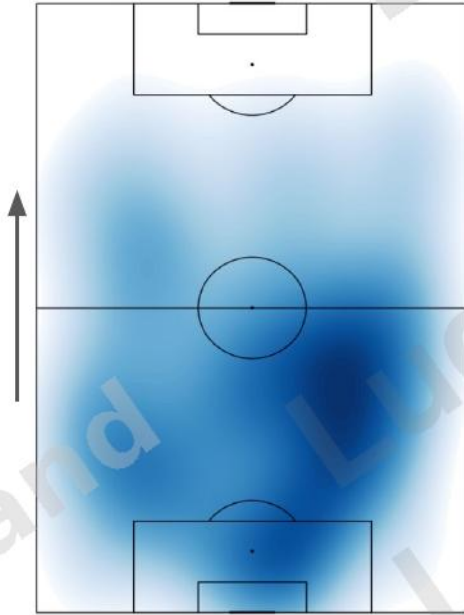
# 03.

- Regain the ball in good areas
- Need to start passing forward after a regain
- Want to have fewer but direct passes in transition rather than many lateral passes

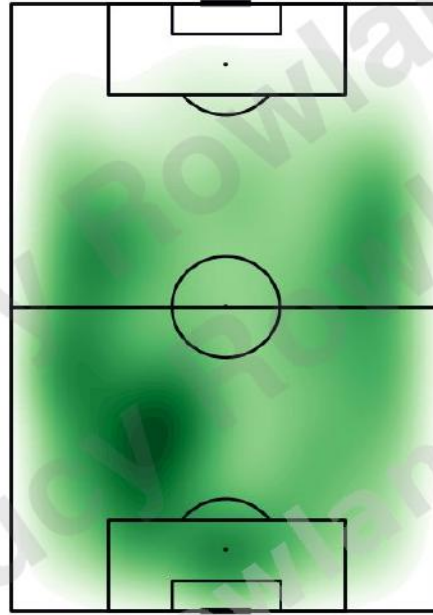
## Regains and Transitions

# Regains (2022)

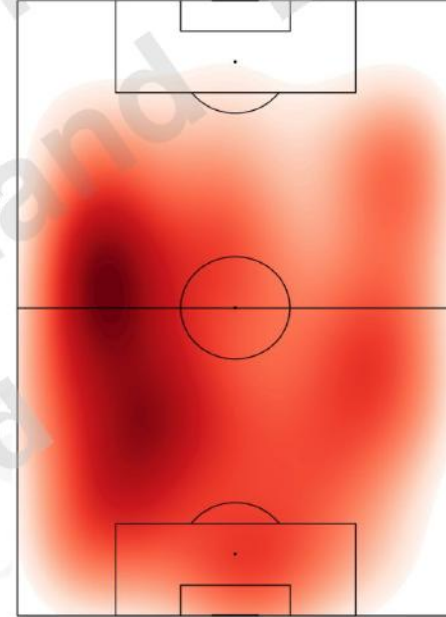
SAN JOSE EARTHQUAKES



TOP MLS TEAMS

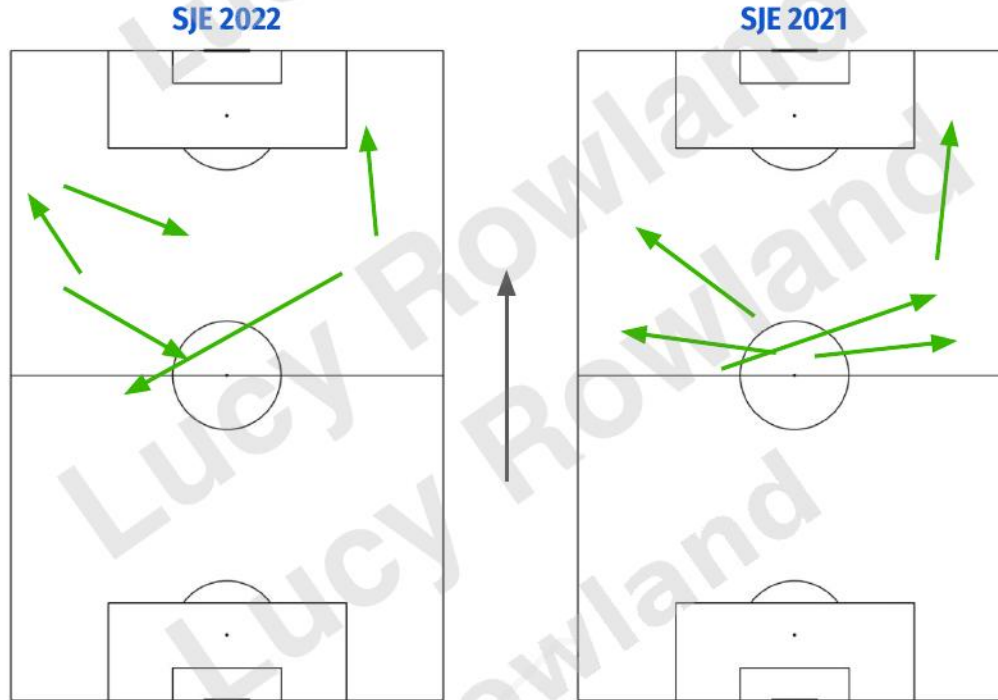


TEAMS vs SAN JOSE EARTHQUAKES



Teams are regaining the ball higher up the pitch against us and exploiting our defensive right flank. However, our regain locations are similar overall to top MLS teams.

# Common First Pass After Quality Regain

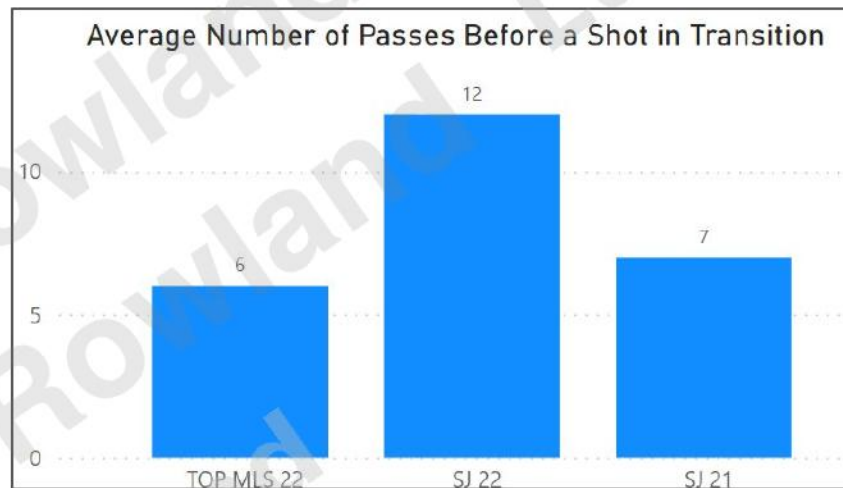


*Common first pass is done by analyzing all of our first pass after regain to find the most common 'cluster'. The analysis groups together passes that have occurred frequently in the same space*

In 2022, we commonly pass backwards after a quality regain. In 2021, we were passing laterally and forward and very rarely backwards after a quality regain.

# Transition Offense

- 2022
  - 0 goals/game (last in MLS)
  - 0.144 xG/game in (26th in MLS)
  - 0.05 xG/shot in (26th in MLS)
- 2021
  - 0.441 goals/game (19th in MLS)
  - 0.572 xG/game (5th in MLS)
  - 0.13 xG/shot (3rd in MLS)

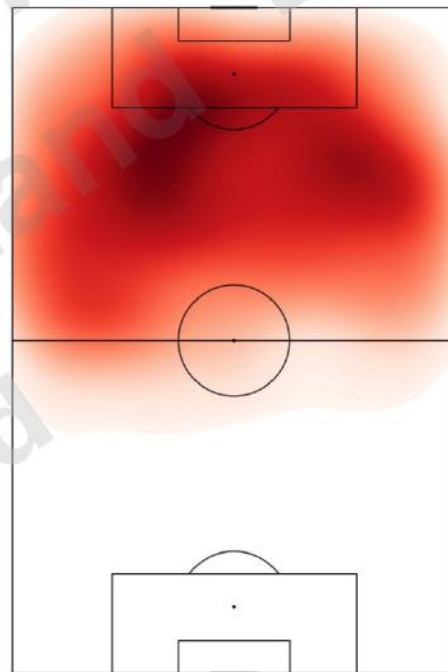


We were a top transitioning team in 2021 but we have significantly slowed in 2022. We can improve our transition by attempting fewer passes, that are direct and quick.

# Transition Defense

END LOCATION OF OPP'S FIRST  
PASS AFTER A QUALITY REGAIN

- 2022
  - 1.5 goals conceded/game (most in MLS)
  - 1.333 xG conceded/game in (most in MLS)
  - 0.21 xG/shot in (3rd highest in MLS)
- 2021
  - 0.559 goals conceded/game (8th most in MLS)
  - 0.608 xG conceded/game (2nd most in MLS)
  - 0.11 xG conceded/shot (14th in MLS)



We are conceding more in transition while offering less going forward than in 2021. Teams are able to attacking us directly through transition and complete quick forward passes to get into our box and create shots.

# Regains and Transitions Summary



- We were a solid team in transition in 2021 but have dropped off in 2022
- We need to pass forward immediately after a quality regain but instead are passing backward
- To have a effective transitions, we need to create fewer, direct passes as opposed to many lateral or backwards passes

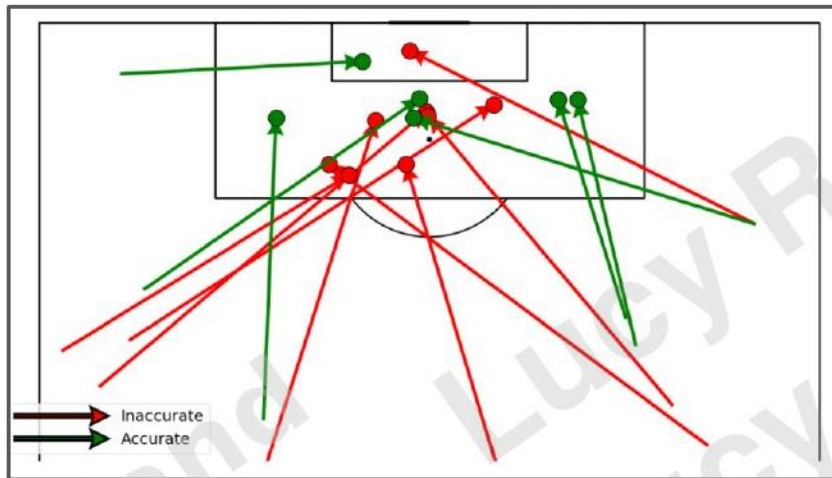
# 04.

- Scored 2 goals off of set pieces
- We create our best chances from corners

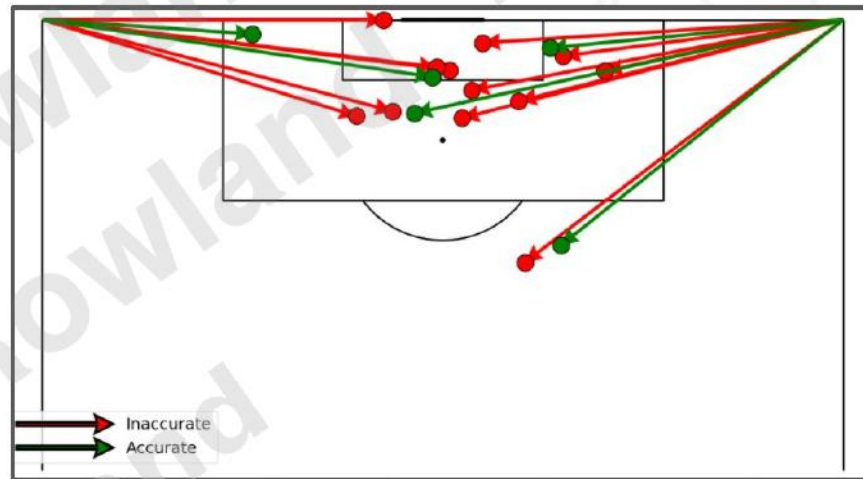
## Set Pieces

# Attacking Set Pieces

## Free Kicks



## Corners



Are most accurate set piece takers are: Espinoza (40%), Chofis (38%), Gregus (37%).

Are most effective (likely to create a shot) set piece takers are: Espinoza (0.09), Yueill (0.06), Gregus (0.05). Chofis OBV is 0.00-0.01

**Our best distributor on free-kicks is Espinoza and second is Gregus.**

**Our most effective areas to distribute corners are to the far post, around the 6 yard box.**

# Summary

- We are not creating enough high quality shots
  - Shooting from outside the penalty area a lot
  - Our high quality shots come from within the penalty area
- How are we creating our shots
  - We play a lot of straight, lateral crosses that don't create high quality shots
  - We create more high quality shots with our cut-back passes which are not doing as much of
- We have a lot of possession in a wide shape, so we possess in and play passes to wide areas
  - We play mostly to wide areas or backward
- Our opponents have less possession, but play forward and centrally
  - They play the most direct and centrally of any team's opponent in MLS
- We are creating less in transition this year than last even though we are regaining the ball well
  - We are mainly playing backward immediately after regaining in good areas (we played forward last year)
- We are conceding much more in transition than we did last year
  - Opponents regain the ball high up the pitch and transition directly and centrally against us